

Soft-start/quick exhaust valves MS..-SV-E and -C

FESTO



Safety compliance!

Maximum safety for people and machines with the MS..-SV-E und -C
Reliably ensures fastest possible exhaust in the event of an emergency stop in safety critical systems. The combination of the soft-start function and safety exhausting makes for improved safety and greater machine availability.

Exclusive to Festo: MS6-SV-E
Certified to DIN ISO 13849-1, category 4, Performance Level e, so that you can be sure machine operators are protected.
Extremely high exhaust air flow rates (9,000 l/min from P2 to P3) and continuous testing and sensing of the safety function further guarantee safe operation when a critical event occurs.

Unique: MS6-SV-E-ASIS
The MS6-SV-E now has an integrated connection to AS-Interface Safety at Work, which eliminates the need for an

additional safety relay. Including switching status sensing and diagnostic function. The input and output pressures P1 and P2 are internally monitored and can be read out via the AS-Interface bus.

Single-channel, inexpensive, high performance: MS6-SV-C or MS9-SV-C
Ideal for applications with safety requirements up to Performance Level c. The reliable, single-channel design enables fast, safe exhaust – and is very cost-effective as well.



Absolutely safe ...

... thanks to quick exhaust!

Compact and highly functional

408.5. PSI →

Product Short Information

Soft-start/quick exhaust valves MS..-SV-E and -C

FESTO



Safety compliance!

Maximum safety for people and machines with the MS..-SV-E und -C
Reliably ensures fastest possible exhaust in the event of an emergency stop in safety critical systems. The combination of the soft-start function and safety exhausting makes for improved safety and greater machine availability.

Exclusive to Festo: MS6-SV-E
Certified to DIN ISO 13849-1, category 4, Performance Level e, so that you can be sure machine operators are protected.
Extremely high exhaust air flow rates (9,000 l/min from P2 to P3) and continuous testing and sensing of the safety function further guarantee safe operation when a critical event occurs.

Unique: MS6-SV-E-ASIS
The MS6-SV-E now has an integrated connection to AS-Interface Safety at Work, which eliminates the need for an

additional safety relay. Including switching status sensing and diagnostic function. The input and output pressures P1 and P2 are internally monitored and can be read out via the AS-Interface bus.

Single-channel, inexpensive, high performance: MS6-SV-C or MS9-SV-C
Ideal for applications with safety requirements up to Performance Level c. The reliable, single-channel design enables fast, safe exhaust – and is very cost-effective as well.



Absolutely safe ...

... thanks to quick exhaust!

Compact and highly functional

408.5. PSI →

Product Short Information

Soft-start/quick exhaust valves MS..-SV-E and -C

Important shared features

Compact dimensions due to integrated soft-start and exhaust functions in a single body enable flexible installation, either as a component of a larger modular MS air preparation system or as a stand-alone unit.

Tamper-proof covers are optionally available.

Unbeatably safe: MS6-SV-E

- Very large flow rate: P2 > P3 9,000 l/min
- Meets Performance Level e to DIN EN ISO 13849-1
- Continuous diagnostics of the safety function

Worldwide unique: MS6-SV-E-ASIS

- Safe slave, AS-Interface Safety at Work, SPEC3.0, profile 7.5.5; 22.0 ... 31.6 V
- Meets Performance Level e to DIN EN ISO 13849-1 With switching status and pressure sensing, as well as diagnostic function

High performance and inexpensive: MS6-SV-C for cell/station level

- High flow rates:
Flow P1 > P2: 5,700 l/min
- Exhaust P2 > P3: 7,600 l/min
- With adjustable pressure ramp-up rate and switching point

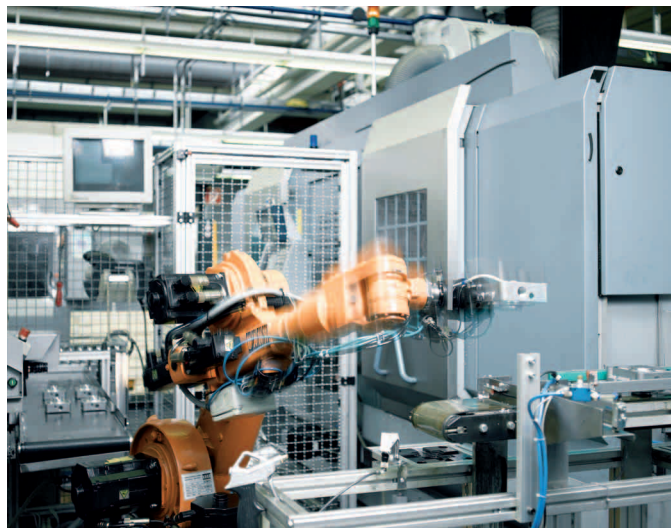
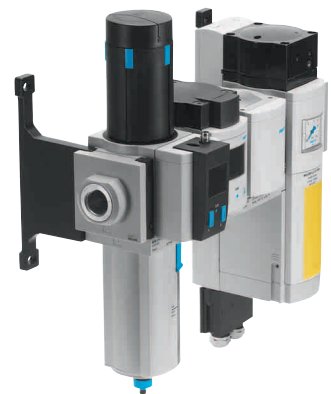
- Meets Performance Level c to DIN EN ISO 13849-1

Safe and inexpensive: MS9-SV-C for small machine level

- High flow rates:
Flow P1 > P2: 16,500 l/min
- Exhaust P2 > P3: 20,500 l/min
- With adjustable pressure ramp-up rate and switching point
- Meets Performance Level c to DIN EN ISO 13849-1

A safe choice

Safety valves MS..-SV.. are part of a modular system and can be easily combined with, for example, filter regulators LFR, fine and micro-filters LFM and flow sensors SFAM.



Tested safety

MS6-SV-E: certified in accordance with DIN EN ISO 13849-1, category 4, Performance Level e
MS6-SV-E-ASIS: applied for certification by TÜV Nord (German safety standards authority)

Safe and fast!

Reliable quick exhaust is ensured by the safety valves as they dump the compressed air in a defined and reproducible time period. Exhaust air flow performance of the MS6-V-E is always a minimum of 150% of the inlet direction flow, ensuring a safe drop of air pressure even in the most critical applications.

Festo AG & Co. KG

Ruiter Strasse 82
73734 Esslingen
www.festo.com
Tel. +49 711 347-0
Fax +49 711 347-2144
service_international@festo.com

Soft-start/quick exhaust valves MS..-SV-E and -C

Important shared features

Compact dimensions due to integrated soft-start and exhaust functions in a single body enable flexible installation, either as a component of a larger modular MS air preparation system or as a stand-alone unit.

Tamper-proof covers are optionally available.

Unbeatably safe: MS6-SV-E

- Very large flow rate: P2 > P3 9,000 l/min
- Meets Performance Level e to DIN EN ISO 13849-1
- Continuous diagnostics of the safety function

Worldwide unique: MS6-SV-E-ASIS

- Safe slave, AS-Interface Safety at Work, SPEC3.0, profile 7.5.5; 22.0 ... 31.6 V
- Meets Performance Level e to DIN EN ISO 13849-1 With switching status and pressure sensing, as well as diagnostic function

High performance and inexpensive: MS6-SV-C for cell/station level

- High flow rates:
Flow P1 > P2: 5,700 l/min
- Exhaust P2 > P3: 7,600 l/min
- With adjustable pressure ramp-up rate and switching point

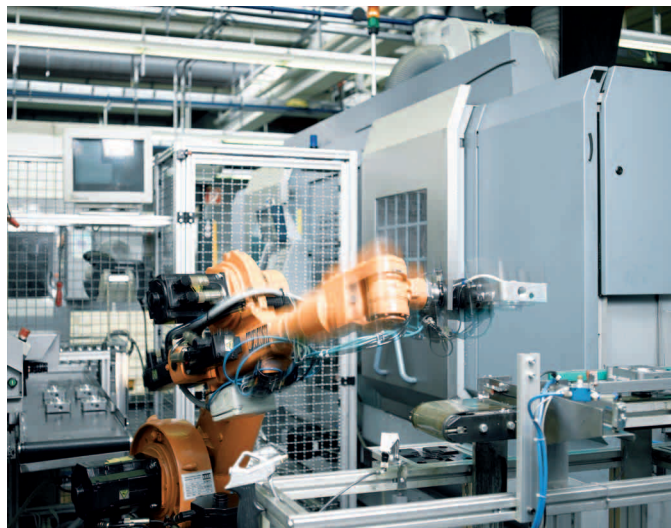
- Meets Performance Level c to DIN EN ISO 13849-1

Safe and inexpensive: MS9-SV-C for small machine level

- High flow rates:
Flow P1 > P2: 16,500 l/min
- Exhaust P2 > P3: 20,500 l/min
- With adjustable pressure ramp-up rate and switching point
- Meets Performance Level c to DIN EN ISO 13849-1

A safe choice

Safety valves MS..-SV.. are part of a modular system and can be easily combined with, for example, filter regulators LFR, fine and micro-filters LFM and flow sensors SFAM.



Tested safety

MS6-SV-E: certified in accordance with DIN EN ISO 13849-1, category 4, Performance Level e
MS6-SV-E-ASIS: applied for certification by TÜV Nord (German safety standards authority)

Safe and fast!

Reliable quick exhaust is ensured by the safety valves as they dump the compressed air in a defined and reproducible time period. Exhaust air flow performance of the MS6-V-E is always a minimum of 150% of the inlet direction flow, ensuring a safe drop of air pressure even in the most critical applications.

Festo AG & Co. KG

Ruiter Strasse 82
73734 Esslingen
www.festo.com
Tel. +49 711 347-0
Fax +49 711 347-2144
service_international@festo.com