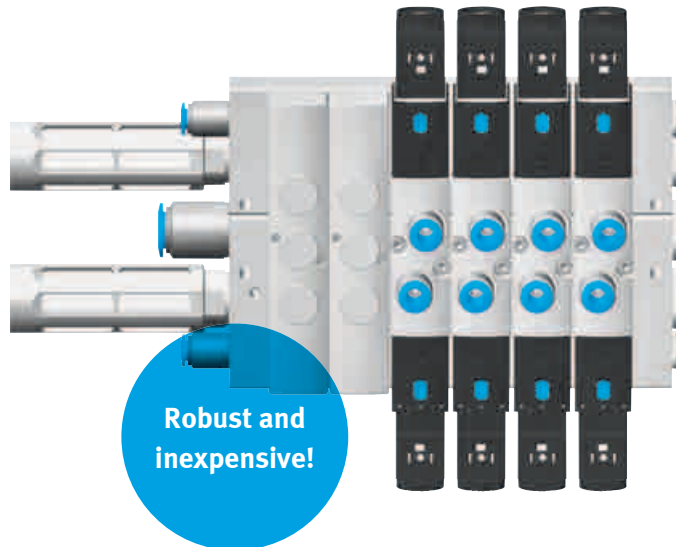


# Valve series VS: VUVS/VUWS/VTUS

FESTO



## The new generation

### Highlights

- High flow rates
- Suitable for a broad range of applications
- Extensive accessories
- External pilot air supply via manifold rail
- Connection technology up to IP67
- Easy to create pressure zones

**VS is distinguished by its outstanding price/performance ratio, exceptional diversity, modern design, as well as robust and durable quality. Valves today require no limits with regard to performance data, proven technologies and materials, with a comprehensive range of accessories, numerous mounting options and easy operations!**

#### **Harsh environment? No problem!**

Select one of our universal piston spool valves for routine tasks. The comprehensive range of accessories also makes it possible to use large connector fittings and metal tubing.

#### **Pre-assembled or on the manifold rail according to customer configuration**

VUVS/VUWS are also available as pre-assembled units with silencers, fittings and coils as ready-to-install individual valves.

VTUS can be mounted separately on the manifold rail configured in line with your requirements.

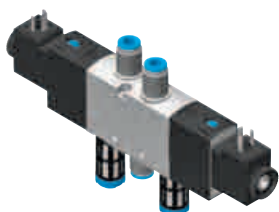
#### **Simple, cost-effective stocking**

Order pre-assembled or assemble it yourself: as a time-tested interface, the hollow armature tube reduces your on-hand stock. You can determine the appropriate coil voltage your-self and mount the coil.

# Valve series VS: VUVS/VUWS/VTUS

## The valve range in detail

Solenoid valve VUVS-..



Pneumatic valve VUWS-..



Valve manifold VTUS



### Ideal for ...

Simple clamping and locking operations in semiautomatic assembly, as well as in larger production lines.

For example in:

- Industry and the manual trades
- Woodworking industry
- Open-pit mining
- Painting systems
- Industrial livestock farming
- ATEX environments
- Conveyor systems
- Bottling systems
- ... and many other industry sectors

### Technical data

Valve type/valve function		Piston spool valves: 3/2, 5/2, 5/3-way		
Valve width	[mm]	20	25	30 <sup>1)</sup>
Flow	[l/min]	700	1200	2000
Ports		G1/8, NPT 1/8	G1/4, NPT 1/4	G3/8, NPT 3/8
Pressure range	[bar]	0 ... 10 2.5 ... 10 for pilot actuated valves (internal pilot air)		
Valve actuation		Pneumatic or electric		

<sup>1)</sup> Available in 2015

### Broad range of accessories for maximum flexibility and universal use

- Coils with various voltages
- Seal kit for coils to IP67
- Supply manifold with common compressed air supply for 5/2, 5/3 and 3/2-way valves
- Compact manifold rail: rails for 3/2 or 5/2, 5/3, 2x3/2-way valves with the connection port one size larger than the valve
- Standard manifold rail: rails for 3/2 or 5/2, 5/3, 2x3/2-way valves with the connection port two sizes larger than the valve and external pilot air supply for vacuum, and for applications in which many valves are switched simultaneously and thus need a compressed air supply with a high flow rate.
- Blanking plates
- Pressure zones
- Air supply plates on manifold rails
- Non-return valves for manifold rails with exhaust air ducting, so that other valves are not influenced by exhaust pressure
- Wall mounting plate
- Foot mounting bracket
- Cap for changing manual override to "pushing, non-detenting" or "covered"
- ATEX variants

**Festo Corporation**  
395 Moreland Road  
Hauppauge, NY 11788

Call (800) 993 3786  
Fax (800) 963 3786  
customer.service@us.festo.com

[www.festo.us](http://www.festo.us)